

WT07

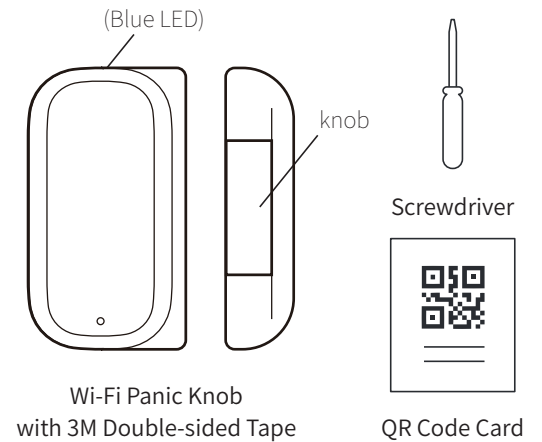
Wi-Fi PANIC KNOB

QUICK START GUIDE



1

In the Box



Wi-Fi Panic Knob
with 3M Double-sided Tape

Screwdriver
QR Code Card

2

Getting started

1. Please check that your smart phone app is updated.
2. Please also check that your Wi-Fi router is working properly and operates on 802.11b/g/n 2.4GHz with WPA/WPA2 encryption. We also support OPEN encryption. i.e. no password

! 2.4GHz is the standard connection for most routers. Please do **NOT** choose 5GHz connection.

Product Features

1. Built-in Wi-Fi module
2. Send alert once pull the knob away
3. Life-time cloud service is included
4. Simple Wi-Fi connection set up with APP
5. Individual tag setting from your smartphone
6. APP records last 30 activations time and date stamped

3

Installing the APP

1. Before powering up the device, please install our free NetzHome APP onto your phone.
2. Now complete your User Profile by inputting your email address and a 6-to-20-digit password.



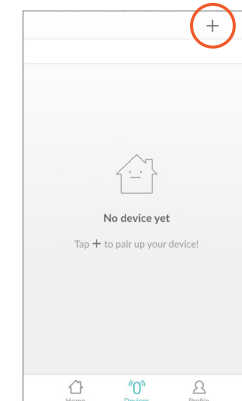
NetzHome



4

Setting up your DEVICE

1. Please have the 2 new AAA batteries ready for pairing, but do not install yet
2. Make sure your smart phone is connecting to the Wi-Fi network to be used by the device.
3. Please login your account
4. Go to "0" Devices section, press +

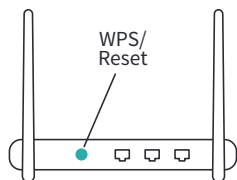


5

- Input your Wi-Fi password.
- Scan the QR code on Hang Tag or device. You may also input the "UDID" manually.

! Since WPS mode will not last long, make sure you finish step 7-9 as quickly as possible.

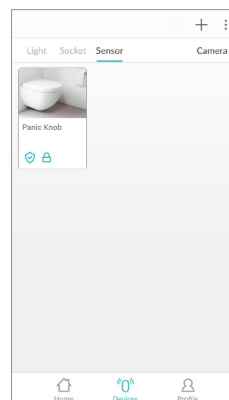
- Press WPS button on your router (Optional but highly recommended)



! Some RESET function is combined with WPS button on router. It is better to refer to user manual of your router.

6

- Insert 2 new AAA batteries, make sure to get the polarity correct.
- Press 'Pair' and wait for network connection.
- The device will now start pairing to the router.
- When pairing is succeed, a "Pair Finish" message will be shown. A new device will be shown on device page. Otherwise, please disconnect the batteries from the device and repeat from step 4.



7

How To Use

Go to "Devices" section > Sensor column

Long press the device to set up the 'mode' of each sensor (i.e. the ringtone/notification that appear on your phone).

	Ringtone	Notification	Listed on History page
Alert	Siren (5 secs repeated twice)	✓	✓
Chime	Short alert	✓	✓
Silent	/	✓	✓
Off	/	/	✓

Set Local Alert: Your local NetzHome siren product(s) (purchase separately) will start buzzing while your sensor is triggered.

History: records the last 30 alerts

Off Time: max. 4 schedule timers for device entering "off mode"

8

Trouble Shooting

CANNOT PAIR THE DEVICE SUCCESSFULLY

- If there are too many Wi-Fi connections around your sensor, turn them off to avoid any disturbance and pair again.
- Check that the router is working properly and that it operates on 2.4GHz.
- Check that the SSID and password are correct.
- Ensure the sensor is in pairing mode, you should remove and reinstall the batteries. If the blue LED indicator turns on, the sensor is ready to pair. The whole pairing process finishes **until the "Pair Finish" message appears.**

DOESN'T WORK PROPERLY or LOSS OF SIGNAL ICON APPEARS (⚠)

- Check whether the Sensor is within coverage of your Wi-Fi router/repeater.
- Check that the router is working properly.
- Replace your batteries with new one.

9

FCC Statement

This device complies with Part 15 of the FCC Rules. Operation is subject to the following two conditions: (1) this device may not cause harmful interference, and (2) this device must accept any interference received, including interference that may cause undesired operation.

Please note that changes or modifications not expressly approved by the party responsible for compliance could void the user's authority to operate the equipment.

NOTE: This equipment has been tested and found to comply with the limits for a Class B digital device, pursuant to Part 15 of the FCC Rules. These limits are designed to provide reasonable protection against harmful interference in a residential installation. This equipment generates, uses and can radiate radio frequency energy and, if not installed and used in accordance with the instructions, may cause harmful interference to radio communications. However, there is no guarantee that interference will not occur in a particular installation. If this equipment does cause harmful interference to radio or television reception, which can be determined by turning the equipment off and on, the user is encouraged to try to correct the interference by one or more of the following measures: --Reorient or relocate the receiving antenna. --Increase the separation between the equipment and receiver. -- Connect the equipment into an outlet on a circuit different from that to which the receiver is connected. --Consult the dealer or an experienced radio/TV technician for help.

10

THANK YOU